

### DESCRIPTION

The S  $\frac{1}{2}$  of NE  $\frac{1}{4}$  of SE  $\frac{1}{4}$  and the  
N  $\frac{1}{2}$  of SE  $\frac{1}{4}$  of SE  $\frac{1}{4}$ , SECTION 33, TOWNSHIP  
48 South, RANGE 42 East, Broward County, Florida.

KNOW ALL MEN BY THESE PRESENTS: That we, the undersigned as officers of POMPANO BEACH LANDS, INC, a Florida Corporation, owners of the lands shown and included on this Plat have caused said lands to be subdivided and platted as shown hereon. All previous plats of said lands are hereby voided, annulled, cancelled and superseded by this Plat.

WE, the undersigned hereby dedicate to the perpetual use of the public for the proper uses thereof, all thoroughfares shown on this plat.

IN WITNESS WHEREOF: We have hereunto set our hands and affixed  
our seals.

WITNESSES:

R. W. G. Heen

Margaret A. Knapp

*Walter Hampton Horn, Jr.* (SEAL)  
POMPANO BEACH LANDS, INC. PRESIDENT

Roy E. Embanks (SEAL)  
POMPANO BEACH LANDS, Inc. SECRETARY

STATE OF FLORIDA, } ss  
COUNTY OF BROWARD }

I HEREBY CERTIFY: That on this day personally appeared before me, an officer duly authorized to administer oaths and take acknowledgements, WADE HAMPTON HORN, Sr., and ROY E. EUBANKS, President and Secretary of POMPANO BEACH LANDS, INC., and they acknowledged before me that they executed the foregoing dedication as such officers of said corporation in the name of said corporation.

WITNESS: My hand and official seal at Fort Lauderdale, Broward County, Florida, this 30<sup>TH</sup> day of DECEMBER 1952.

J. W. McLaughlin  
NOTARY PUBLIC - STATE OF FLORIDA

My Commission Expires: Feb. 16th 1955

I HEREBY CERTIFY: that this Plat complies with the provisions of  
"AN ACT TO REGULATE THE MAKING OF SURVEYS AND FILING  
FOR RECORD OF MAPS AND PLATS IN THE STATE OF FLORIDA,"  
approved by the Governor, June 11th, 1925.

Ted Cabot  
CLERK OF THE CIRCUIT COURT

By: Dorothy Adams  
DEPUTY CLERK

This instrument filed for Record this 19 day of JANUARY, 1953,  
and recorded in Book 31, of Plats at Page 1, RECORD  
VERIFIED.

Ted Cabot  
CLERK OF THE CIRCUIT COURT

BY: Dorothy Adams  
DEPUTY CLERK

STATE OF FLORIDA }  
COUNTY OF BROWARD } ss

I HEREBY CERTIFY: that this Plat is a true and correct representation of a Survey made by me and that Permanent Reference Monuments have been set as indicated.

Dated at Fort Lauderdale, Florida, this 30<sup>TH</sup> day of DECEMBER, 1952

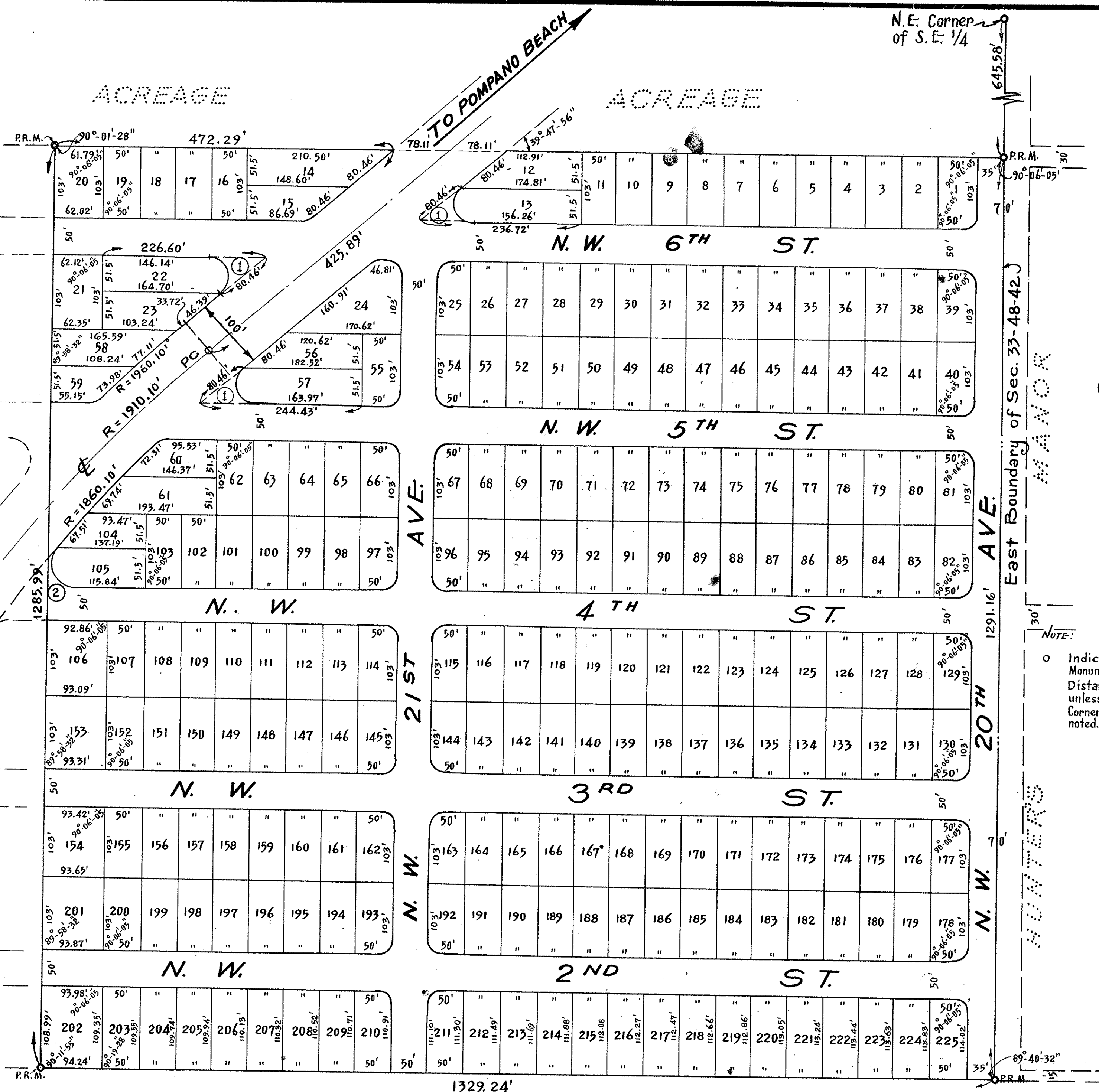
J. W. McLaughlin  
REGISTERED ENGINEER No. 1713  
REGISTERED LAND SURVEYOR No. 167  
STATE OF FLORIDA

Approved for Record:

J. B. Davis.  
COUNTY ENGINEER

As owners and holders of a Mortgage on the above described property,  
I hereby approve this Plat.

Robert L. Parker:  
Lma Parkers



CURVE DATA

$$\begin{aligned} \textcircled{1} \quad \Delta &= 140^\circ - 12' - 04'' \\ R &= 28.02' \\ T &= 80.46' \\ \text{Arc} &= 68.56' \end{aligned}$$

②  $\Delta = 134^{\circ} - 47' - 56'$   
 $R = 30.21'$   
 $T = 72.57'$   
 $\text{Arc} = 71.07'$

COBBIER City

SEC. 33, TWP. 48 S., RGE. 42 E.  
BROWARD COUNTY, FLORIDA.

J.W. McLAUGHLIN - CIVIL ENGINEER  
FORT LAUDERDALE - FLORIDA

SCALE: 1" = 100'      JANUARY 1953

# DRC

PZ25- 12000012  
12/03/2025

# DRC

PZ25-12000013

10.01.2025